

Rayterton ERP for Manufacturing

Rayterton ERP for Manufacturing is a strategic, enterprise grade digital infrastructure designed for multi plant manufacturers and large industrial groups. The platform goes far beyond transactional ERP by embedding governance, operational intelligence, quality compliance, traceability, and profitability control into a single unified manufacturing ecosystem.

End to end plant lifecycle platform

Rayterton ERP for Manufacturing is an end to end plant lifecycle platform designed for manufacturers to plan and execute production with finite capacity discipline, control procurement and inventory with audit ready evidence, manage engineering change safely, and close finance with cost traceability from material to margin.

Implementation Philosophy and Experience

With **Rayterton** that specializes in customizing solutions to fit your needs 100%, you do not need to worry about disruption or change the system can follow your existing business processes and operations.

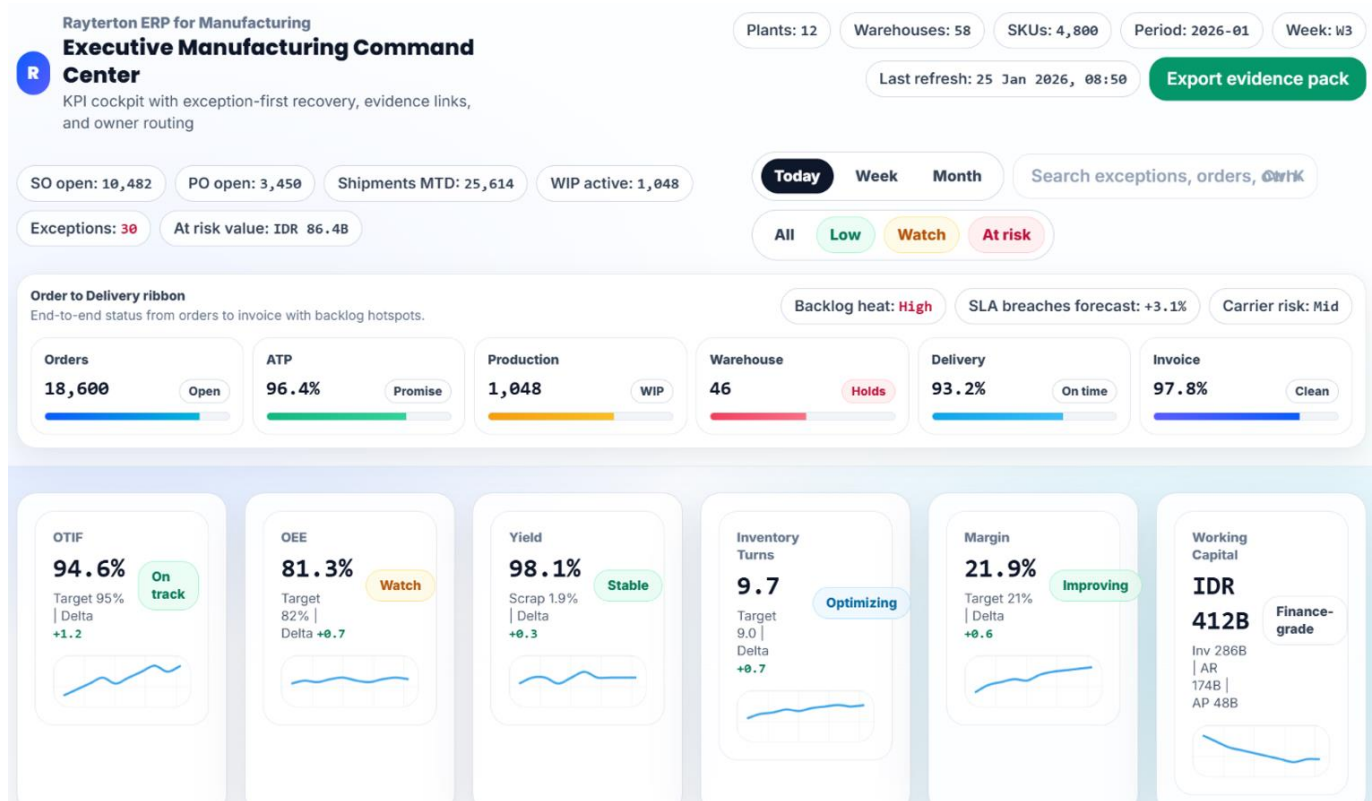
- *Phased rollouts, go live on specific modules with your own pace*
- *Existing processes respected and emphasized*
- *Change requests included in maintenance; no fear of missing out important business needs during initial implementation phase*

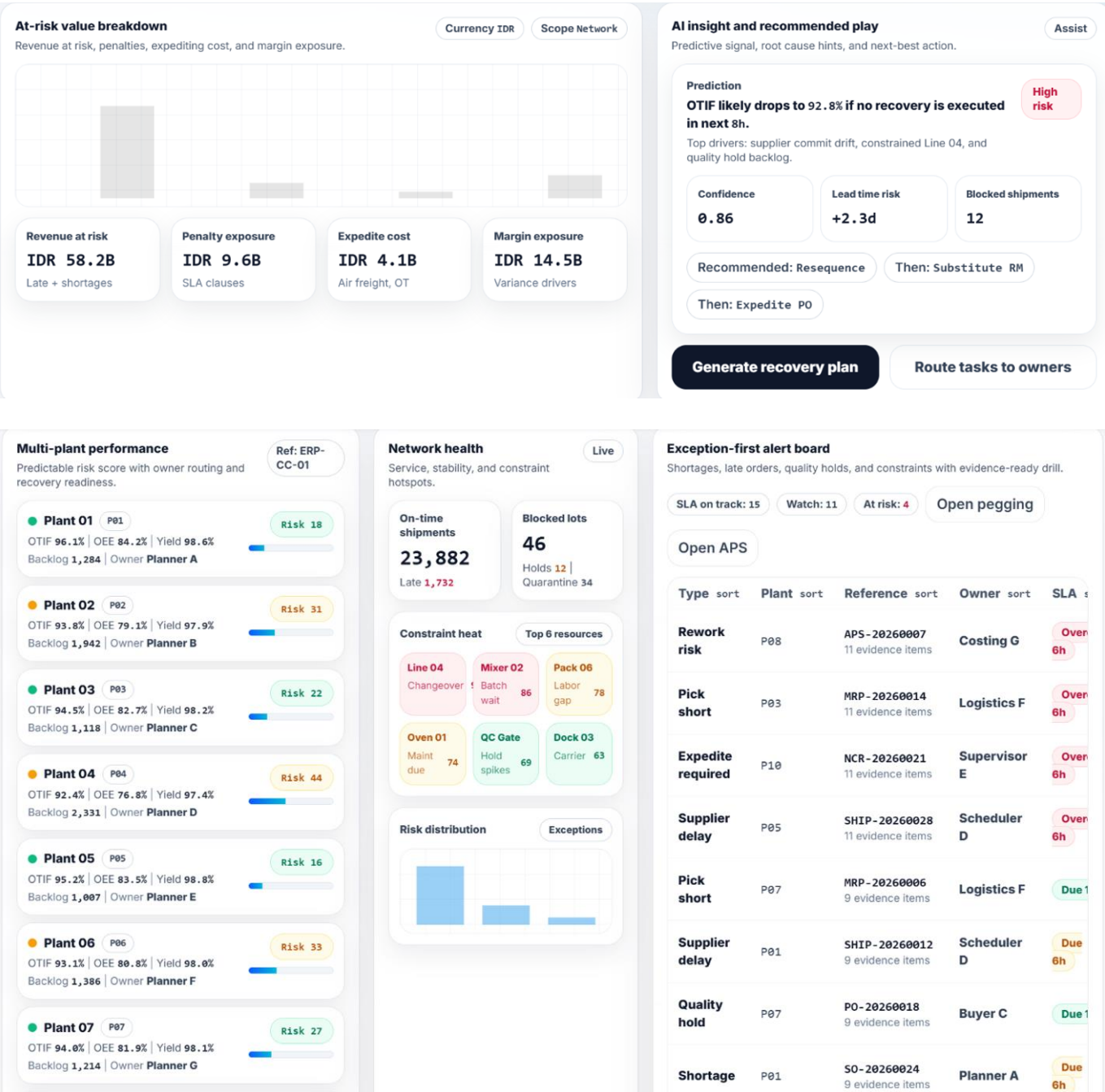
This is a short generalized sequence of implementation to get started with Rayterton ERP :

1. Setup Foundation and Master Data
2. Define BOM and Routings
3. Configure Planning Policies
4. Enable Procurement Controls
5. Establish Warehouse Execution
6. Release Production Orders
7. Run Finite Scheduling
8. Execute Quality and CAPA
9. Activate Traceability
10. Close Costing & Close Finance
11. Profitability Cockpit

Executive Manufacturing Command Center

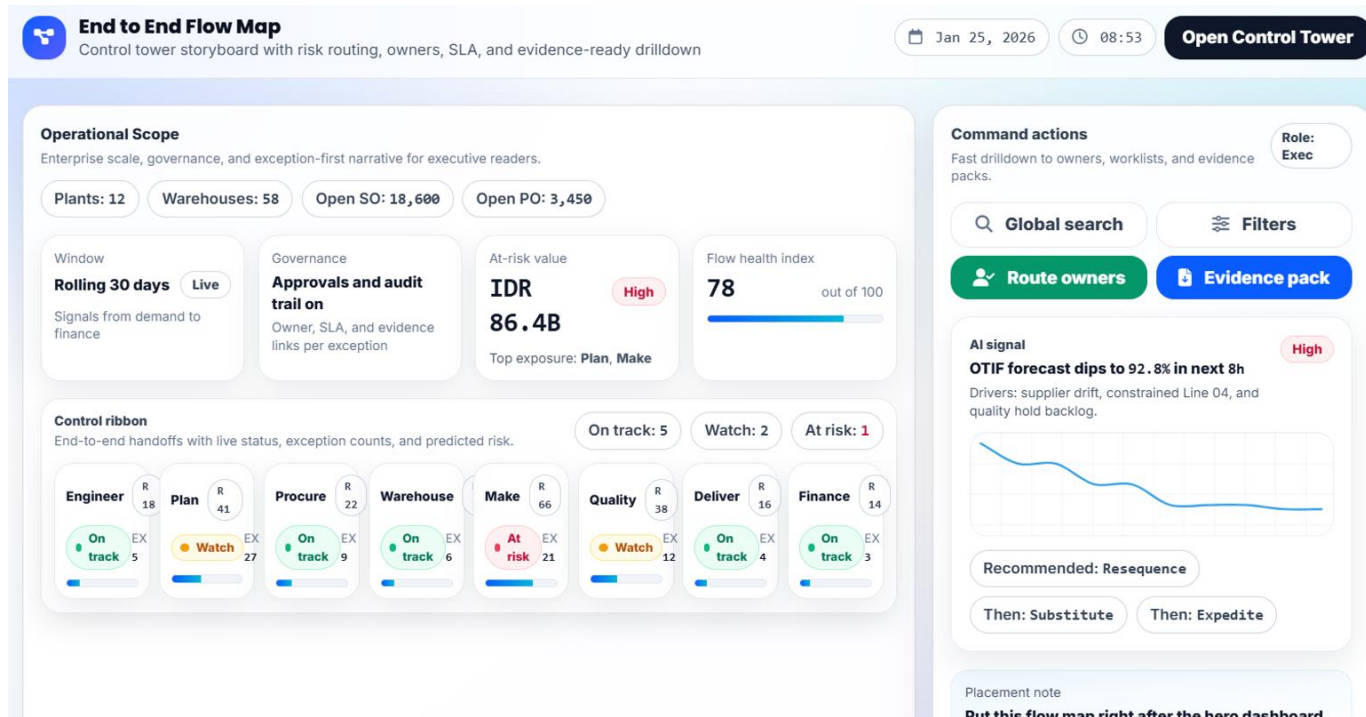
Monitor everything in your manufacturing business from a centralized command center, complete with dashboards equipped with everything you need to monitor and make decisions. Give leadership a real time control view of service, capacity, quality, inventory, and margin exposure. Includes **Executive KPI Cockpit** (OTIF, OEE, yield, scrap, inventory turns, working capital, margin), **exception tiles** (late orders, material shortage, capacity overload, quality holds), and **drilldown to planning, execution, quality, and finance**. This module feeds prioritized exceptions into Order to Cash, MRP and Scheduling, Procurement, Production Execution, Quality, and Costing, and consolidates outcomes back into executive evidence packs.

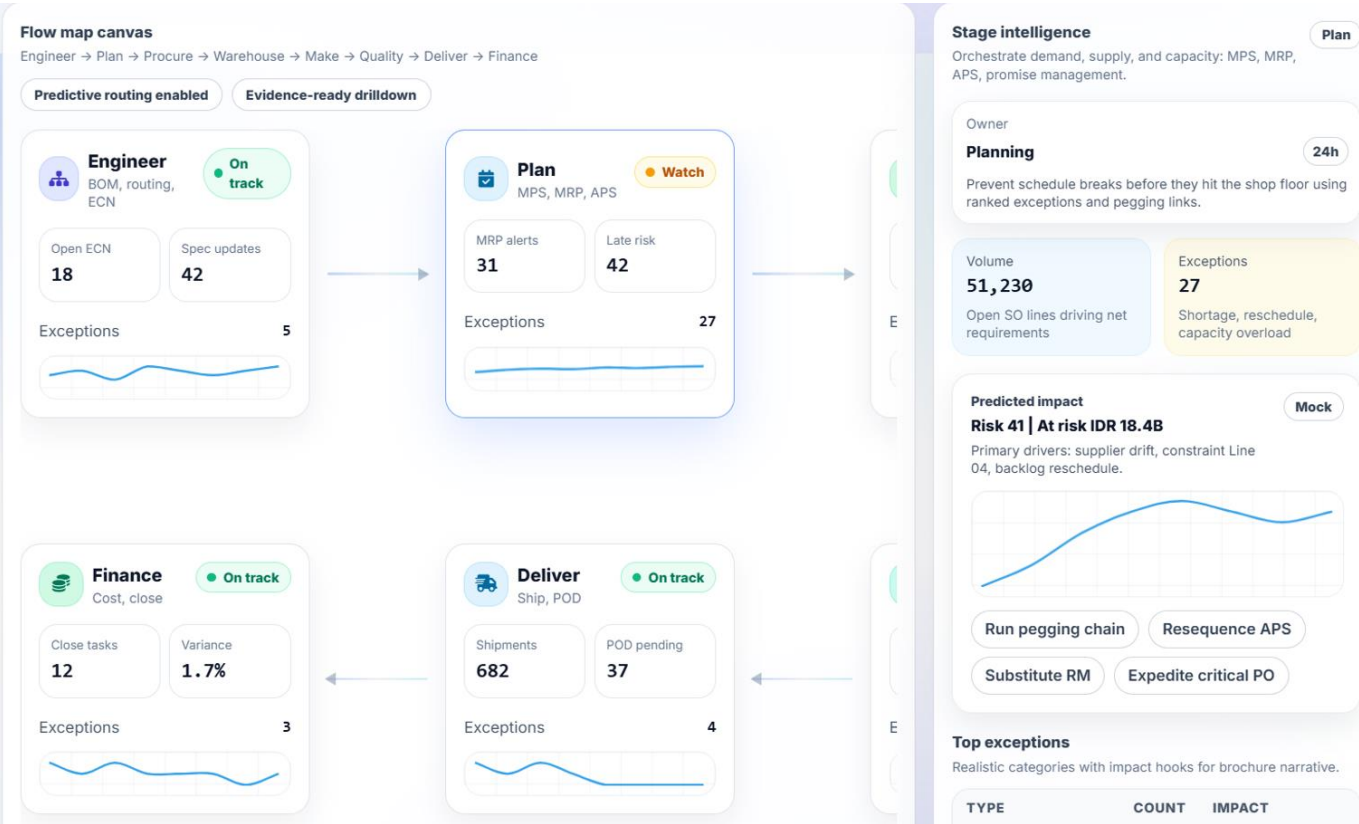




End to End Order to Cash Control Tower

Visualize backlog risk by plant and week, protect customer service with exception based orchestration, and keep finance aligned with fulfillment reality. Includes **Order timeline control tower, backlog heatmap by plant and week, ATP signals connected to MRP and finite schedule, shipment and invoicing readiness, and service recovery workflow for late or partial deliveries.** This module pulls supply, capacity, and constraint signals from MRP and Finite Scheduling, triggers fulfillment through Warehouse Execution, and activates invoicing and margin trace into Costing and Profitability.





Exception heat view

Compact, governance-friendly table for executive control narrative.

Updated: 08:53

STAGE	STATUS	EXCEPTIONS	PRIMARY DRIVER	OWNER	SLA
Engineer	On track	5	ECN approvals pending	Engineering	48h
Plan	Watch	27	Shortage and capacity constraints	Planning	24h
Procure	On track	9	Supplier confirmation gaps	Procurement	48h
Warehouse	On track	6	Bin discrepancy and cycle count variance	Warehouse	24h
Make	At risk	21	Work center bottleneck and downtime	Operations	8h
Quality	Watch	12	Incoming inspection holds	Quality	24h
Deliver	On track	4	Carrier scheduling	Logistics	48h
Finance	On track	3	3 way match exceptions	Finance	72h

MRP Exception Monitor and Pegging

Turn planning from a batch report into an executive decision engine. Detect shortages, safety stock breaches, and late supplies, then resolve them with pegging visibility that shows exactly which sales orders, production orders, and customers are impacted. Includes **MRP exception inbox**, **pegging chain visibility**, **shortage resolution actions** (expedite, substitute, reschedule, split), and **governance controls** for actions that impact cost or schedule. This module feeds prioritized shortages into Procurement and Production Dispatch, updates promise dates for Order to Cash, and outputs audit payloads and board packs for governance review.

MRP Exception Monitor and Pegging

Exception-driven planning with constraint signals, governance, and audit-ready evidence

Run: MRP-RUN-2026-01-20-1520
Snapshot: 7F3A-11C9-2B7E
Latency: 3m | Confidence: High
Period: 2026-01

Month: Jan | Week: W3 | Shift: Day
Plants: 8
Updated: 2026-01-20 15:20
Command Ctrl K

Export board pack
Evidence pack

Open exceptions
124
Severity mix: High 18 | Medium 46 | Low 60
Daily standup view Exception-driven

Revenue at risk
IDR 38.4B
OTIF impact: -2.1 pts
Customers impacted: 27 Impact

SO impacted
312
Critical tier: A 64
Promise dates monitored Demand

PO at risk
156
Supplier flags: 12
Lead time variance tracked Supply

Capacity alerts
31
Bottlenecks: WC-CNC-02
Linked to APS Gantt Constraint

Quick filters
Saved view: Daily Standup
Saved views
Scenario compare
Search item, SO, PO, supplier, work centre
Plant: PLT-01 Week: All Severity: All Type: All

Exception List (Actionable)
Click a row to load pegging chain, recommended playbook, and governance actions. All lists are 20+ rows for enterprise-scale screenshots.

On track actions
Watch
At risk

Severity	Type	Plant	Item	SO	Need date	Short qty	Supplier	Work center
High	Supplier Delay	PLT-01	RM-RESIN-A Root cause: Supplier Delay	SO-2026-018311 Pegging enabled	2026-01-22	1800 Units	ChemPrime OTD monitored	WC-MIX-01
Low	Reschedule Out	PLT-01	FG-VAL-980 Root cause: Demand Spike	SO-2026-017152 Pegging enabled	2026-01-26	336 Units	Sumatra Steel OTD monitored	WC-CNC-01
Medium	Expedite	PLT-01	RM-RUBBER-F Root cause: Demand Spike	SO-2026-017304 Pegging enabled	2026-01-22	632 Units	Nusantara Plastics OTD monitored	WC-CNC-01

Selected exception
Pegging chain with recovery playbook, governance actions, and scenario options.

Shortage in PLT-03
Item RM-ALU-6061-08 impacts SO-2026-018442 with IDR 1.9B revenue at risk.

OTIF impact
3 days late risk

Constraint signal
WC-CNC-02

Owner and SLA
Planner - MRP
2026-01-21 12:00

Governance
Approval: Yes
Status: Open

Root cause and evidence signals

- PO ETA slipped by 4 days (lead time variance)
- Inventory accuracy is high (98.4%), shortage is real
- Work center WC-CNC-02 is at 112% load (capacity risk)
- Customer tier A with penalty clauses

Decision log (audit-ready)

Clear log

All actions captured with who, when, why, and before/after for governance and evidence packs.

Time	Exception	Action	Owner	Reason code	Approval
2026-01-20 15:20	EXC-0001	Scenario A commit	Planner - MRP	SUPP_DELAY	Yes
2026-01-20 15:20	EXC-0001	Scenario A commit	Planner - MRP	SUPP_DELAY	Yes
2026-01-20 15:05	EXC-0004	Quality release request	Quality Manager	QUALITY_HOLD	Yes

Pegging view

SO to supply

Sales Order

SO - 2026-018442

Customer: Aurora Energy | Tier A | Due: 2026-01-24

Readiness

Fill indicates readiness confidence.

Planned Order

PLN-PRD-003812

Plant: PLT-03 | Qty: 800 | Start: 2026-01-22

Readiness

Fill indicates readiness confidence.

PO Suggestion

POS-000992

Supplier: MetalWorks Asia | Qty: 1200 | Need: 2026-01-21

Readiness

Fill indicates readiness confidence.

Finite Scheduling Control Board

Schedule production with finite capacity, minimize changeovers, and protect critical windows with approval fences. Includes **Finite capacity scheduling board, changeover aware sequencing, dispatch windows and frozen fences, simulation with deltas, and controlled approvals for schedule moves with service impact.**

Finite Scheduling (APS) Gantt Board

Work center timeline with constraints, changeovers, governance, and publish gates

Run: APS-RUN-2026-01-20-1540

Snapshot: C9A2-04F1-71B0

Latency: 2m | Confidence: High

Horizon: 20 days

Work centers: 12

Command

Ctrl K

Publish schedule

Executive outcome

OTIF protection and WIP control

Finite capacity, governed changes, evidence-ready publish pack for leadership review.

OTIF risk -2.3 pts

Late jobs 11

Changeovers 8

Capacity posture

89%

Weighted utilization across critical work centers.

Revenue at risk

IDR 8.3B

Based on pegged customer orders in late lanes.

Freeze fence

48h

Moves inside fence require approvals and justification.

Policy: maker-checker

Scenario

Baseline

Use simulate to compare OTIF, cost, and WIP impact.

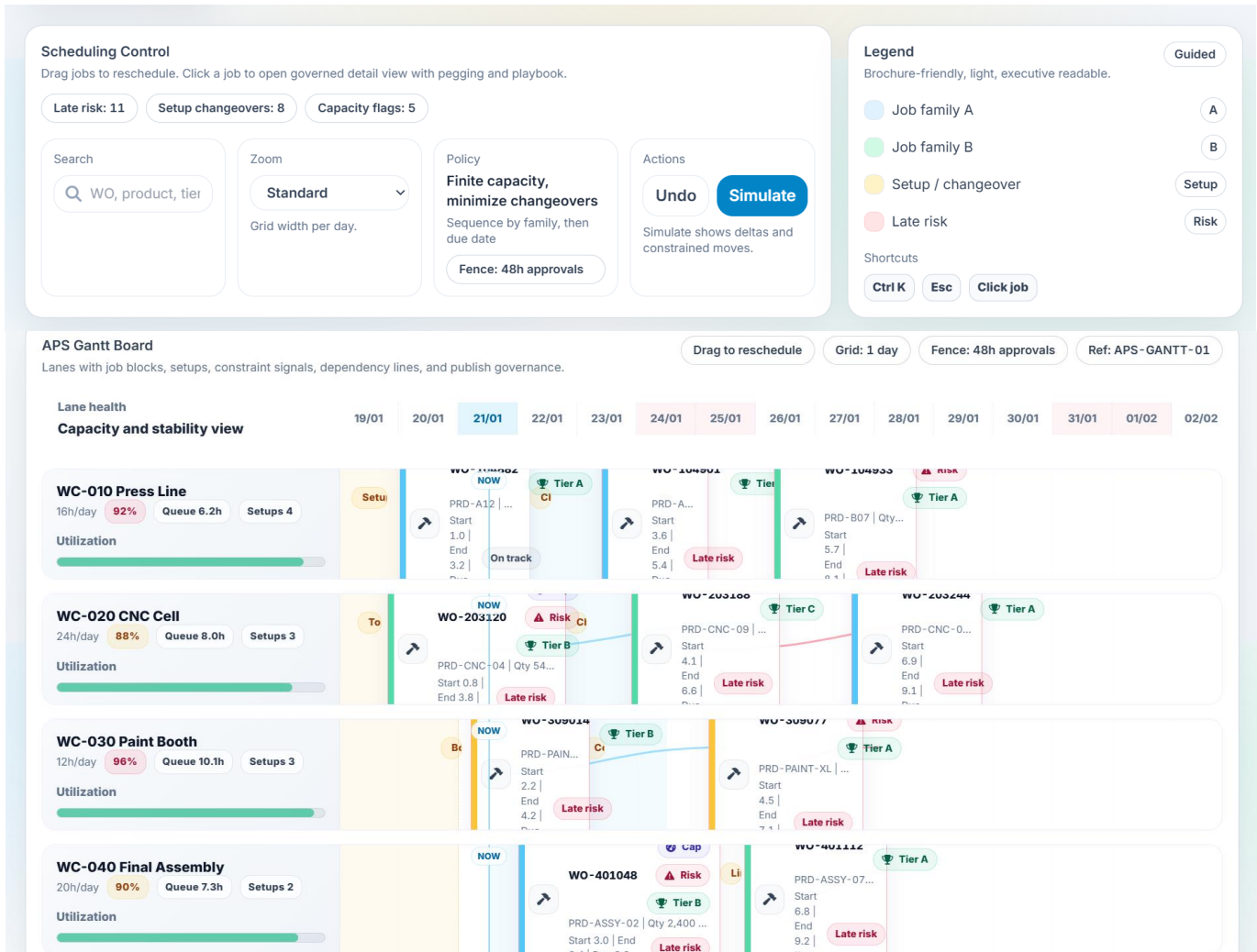
Scenario compare

Evidence

Publish pack ready

Before/after, approvals, constraints, and audit snapshot.

Evidence pack



Engineering BOM and Change Control

Control BOM versions, routings, and effectivity dates with workflow discipline so production, procurement, and costing always use the correct revision. Prevent uncontrolled substitutions and reduce scrap caused by unmanaged change. Includes **Engineering BOM, routing versions, alternates and substitutions, effectivity windows, ECO workflow, impact analysis, and release control to production**. This module feeds released BOM and routing versions into MRP, Procurement, and Production Orders, and updates standard cost structures that flow into Costing, Variance, and Profitability.

Engineering Control Room

BOM, routing, effectivity, and change governance in one view

Plant: 02

Rev: R12

Baseline: R11

Compare

Create ECO

Release to MRP

Product Master

Decision grade metadata for engineering, planning, and costing.

Controlled

Maker checker

Digital thread

Effectivity

Finished Good

FG-AXP-1200

Apex Pump 1.2kW

Total cost rollup

Rp

1.347.200

Delta vs baseline: +2.3%

Lead time risk

7

Long lead items flagged

Alt coverage

82%

Single source reduced

Routing std time

2.75h

Feeds APS and costing

Governance fence

Changes inside 14 days require ECO approval

Auto checks: effectivity overlap, alt priority, sourcing, compliance

Impact preview

Cost, lead time, and capacity impact before release

Simulate MRP demand and routing load (mock behavior)

Command controls

Role: Eng

High density, fast filtering, compare mode.

Standard

Dense

Risk

Alt chips

Sub chips

Cost

Availability

Effectivity date

2026-01-21

Slide to preview BOM visibility by effective date (mock filter).

Simulate

Evidence

Search

Part ID, description, or risk tag

Matches expand automatically and keep context.

Multi level BOM

Select a node to see digital thread, sourcing, and change impact.

Levels: 4

Comps: 67

Flags: 7

Eff: 2026-01-21

View: standard

Expand

Collapse

Compare: off

FG-AXP-1200

Apex Pump 1.2kW (Finished Good)

Qty: 1 EA

Eff: 2026-01-15

To: Open

Cost: Rp 1.347.200

Lead: 0d

Stock: 0

Children: 3

ASM-AXP-1200-HSG

Housing Assembly

Qty: 1 EA

Eff: 2026-01-15

To: Open

Cost: Rp 294.400

1 alt

Setup

Routing operations

Step sequencing with setup vs run, and a quick load preview.

Std time: 2.75h

Seq	Operation	Work center	Time	Load
10	Press housing Forming and trimming	WC-010 Press Line	0.57h	
			Run 0.45h Setup 0.12h	Die family controlled
			Validated, WI linked, Setup	
20	CNC machining Bore and shaft fit	WC-020 CNC Cell	0.70h	
			Run 0.62h Setup 0.08h	Tooling recipe by variant
			Validated, WI linked, Setup	
30	Winding Stator coil winding	WC-025 Winding Cell	0.44h	
			Run 0.38h Setup	Gauge check
			Check	

Decision panel

Single pane for evidence, sourcing, and ECO traceability.

Ref: ENG-DTL-01

Selected

FG-AXP-1200

Apex Pump 1.2kW (Finished Good)

Effectivity

2026-01-15 to Open

Approved

No critical risk flags detected at this effectivity date.

Impact preview

Cost

Rp 1.347.

Lead

0d

Stock

0

Used for pre-release checks before MRP and APS commit.

Sourcing

N/A

AVL: 0

No alt group

Approved vendor list and alternates prioritized.

Compliance

RoHS

REACH

CoC linked

Evidence links included in export pack.

Traceability

ECO-2026-0142

Approved by

Head Engineer

Audit hash

b7c1-9a2e-44f0

Maker checker log for audit and ISO evidence.

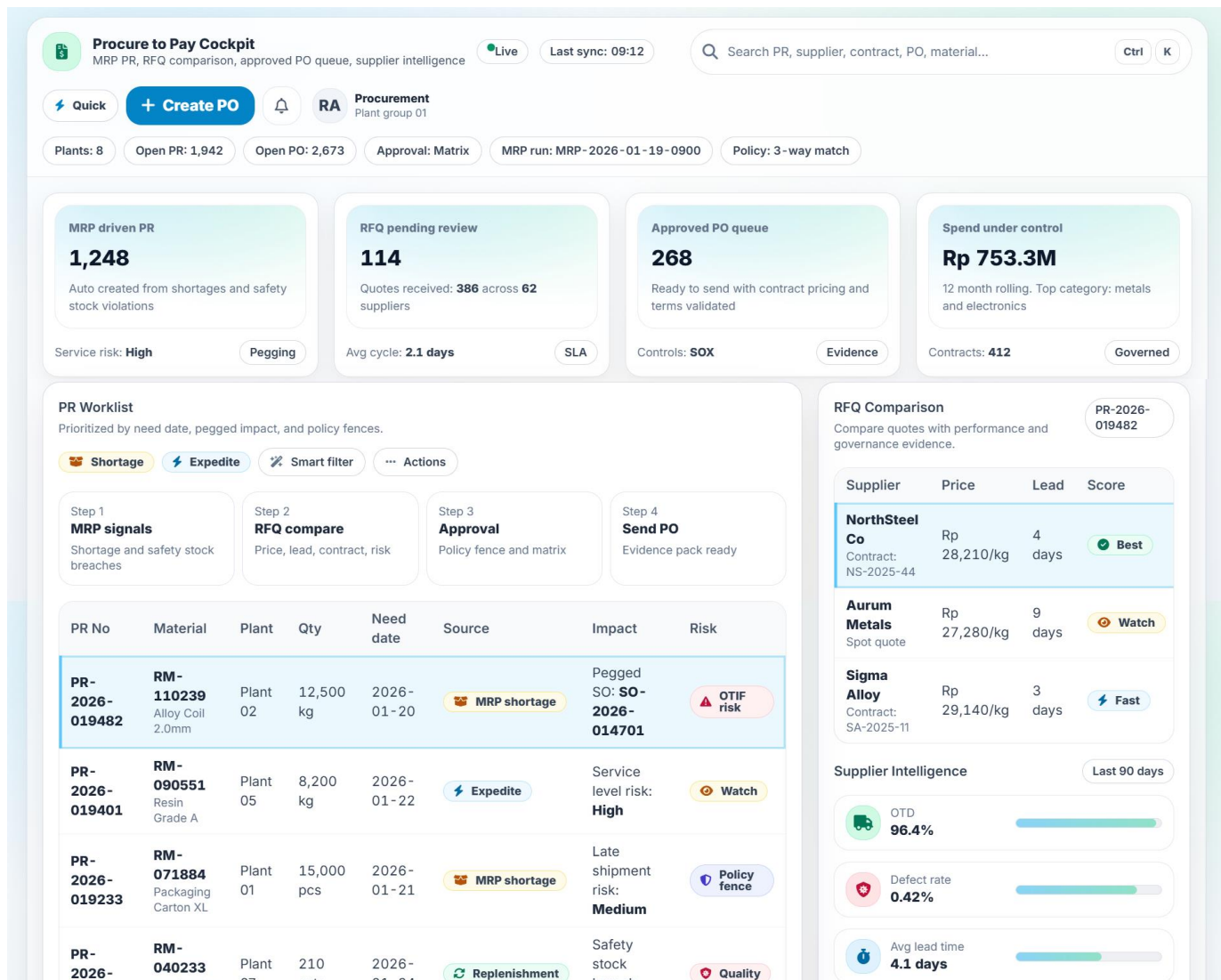
Digital thread links

Visit Us : raytertonacademy.com | rayterton.com

9

Procure to Pay Spend Control Tower

Convert MRP signals into purchase requests, compare RFQs with supplier performance context, enforce approvals with matrix governance, and complete 3 way match with evidence packs ready. Includes **MRP driven PR creation, RFQ comparison, approval fence and matrix, PO release, 3 way match policy, supplier performance signals, and exception handling for shortages and expedite**. This module pulls demand from MRP and dispatch needs from Production, issues PO commitments that protect service, and feeds goods receipt and invoice matching into Inventory, Costing, and Finance controls.



Warehouse Bin and Wave Execution

Execute warehouse operations with bin level control and wave discipline. Improve picking speed, reduce mispicks, and protect production kits and customer shipments with barcode workflows and real time task visibility. Includes **Bin master and slotting, wave planning, pick pack ship, kitting for production, cycle count and variance control, and exception handling for shortages and damages.** This module pulls demand from Order to Cash and Production Dispatch, confirms material readiness back to Production Execution, and posts inventory movements into Costing, Traceability, and Finance.

WMS Bin View

Bin stock, putaway tasks, cycle count with accuracy and risk

Search bin, item, lot, tr

Ctrl

K

Warehouse: WH-02

Bins: 4,812

Tasks open: 186

Commands

Create task

Inventory accuracy

99.2%

Variance below threshold in last 30 days

Last cycle count: 2026-01-18

OK

Putaway SLA

96.8%

Completed within 4h target

Avg putaway time: 1h 12m

SLA

Lot and serial coverage

100%

High value and regulated items fully tracked

Lots: 18,442

Traceable

Cycle count due today

142

A class bins prioritized by risk and velocity

Open variances: 7

Review

Bin Map (Zone A, Aisle 03)

Select a bin to open lot and serial detail plus task queue.

Scanning enabled

Bin level

Heatmap

Search bin

Zone: A

Temperature: Ambient

Pick faces: Yes

Utilization: 78%

Replen tasks: 34

Zoom 6 cols

Less

More

Legend: Low | Med | High | Full

A03-01-01

22%

Zone A

LOW

Picks

A03-01-02

88%

Zone A

FULL

Picks

A03-01-03

54%

Zone A

MED

Picks

A03-01-04

67%

Zone A

HIGH

Picks

A03-01-05

31%

Zone A

LOW

Picks

A03-01-06

45%

Zone A

MED

Picks

A03-02-01

72%

Zone A

HIGH

Picks

A03-02-02

39%

Zone A

LOW

Picks

A03-02-03

58%

Zone A

MED

Picks

A03-02-04

76%

Zone A

HIGH

Picks

A03-02-05

18%

Zone A

LOW

Picks

A03-02-06

90%

Zone A

FULL

Picks

Bin Detail

Lot and serial view with operational tasks and governance.

A03-02-04

Device: Online

Fast action

Scan bin, lot, serial

Scan

Create count

Create putaway

Lock

Stock (Lot / Serial)

Live

Item	Lot/Serial	Qty
RM-110239 Tracked	LOT-AL-202601-0441	5,200 kg

Cycle Count Schedule

Today

Bin	Class	Risk
A03-01-02	A	High
A03-02-04	A	Medium
A03-03-06	B	Watch
A03-04-05	B	Watch

Accuracy indicator

Variances auto routed for investigation with recount approvals and audit trail.

Select a bin on the left to refresh lot, serial and tasks.

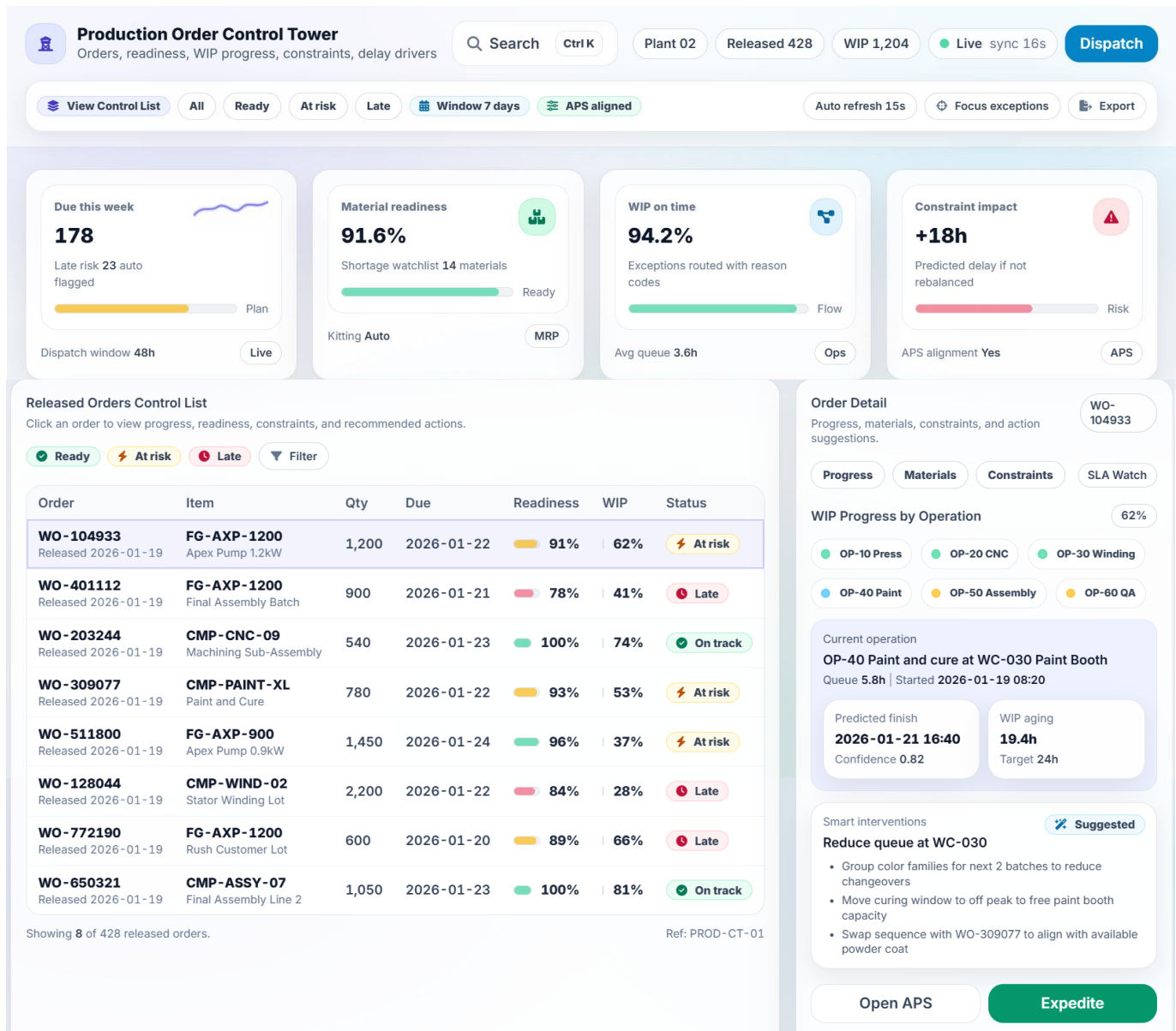
Ref: WMS-OPS-01

Visit Us : raytertonacademy.com | rayterton.com

11

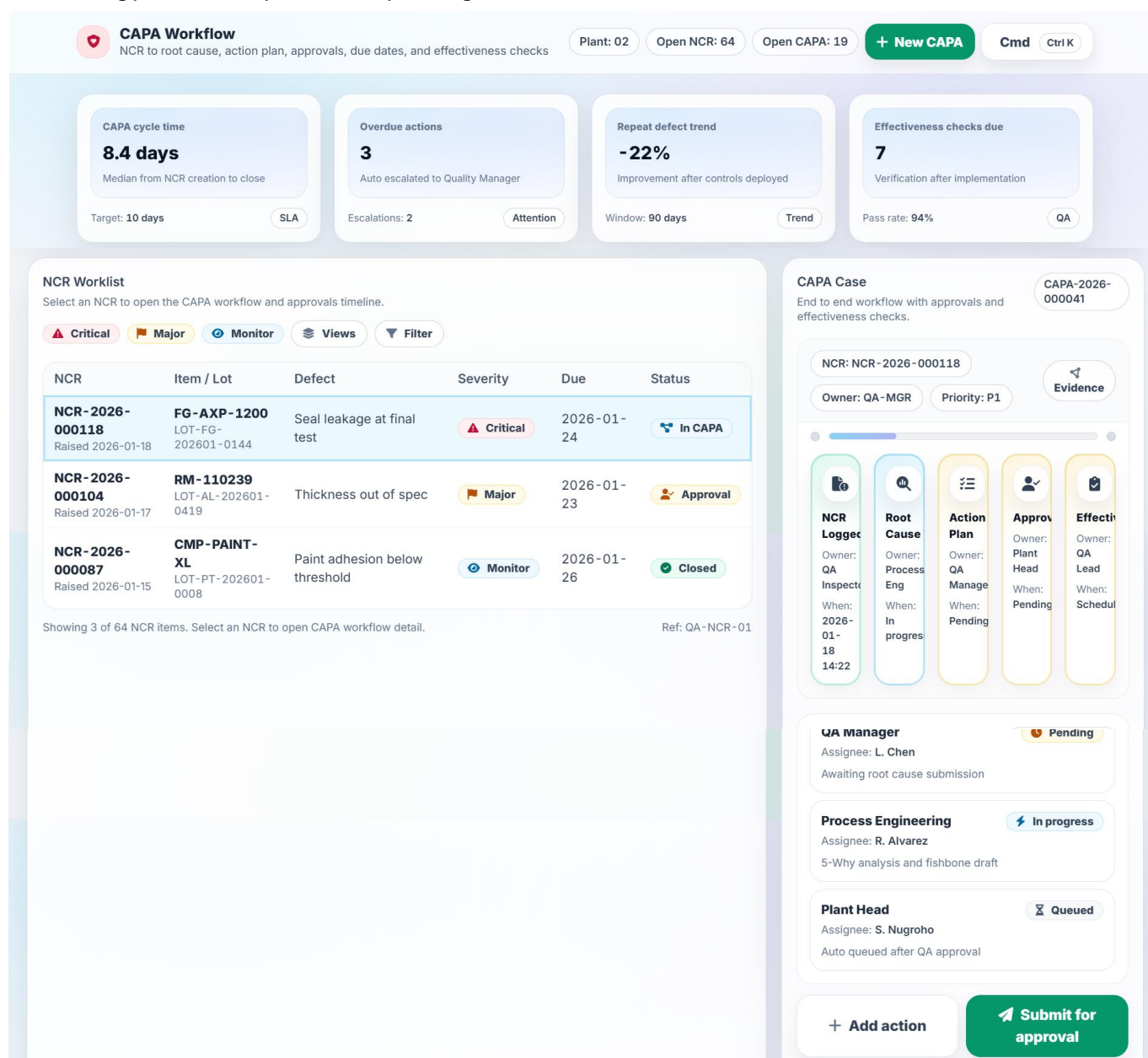
Production Order Control Tower

Run the shopfloor with one operational cockpit. Track dispatch readiness, material kitting, progress against plan, and constraint risks in one view. Resolve issues early with controlled actions that protect service and cost. Includes **Production order control tower, dispatch window control, material readiness and shortage watchlist, progress against plan, labor and machine checkpoint signals, and exception driven actions**. This module consumes the finite schedule and releases work to execution, sends consumption and completion signals into Costing, and triggers quality checks and traceability capture at each step.



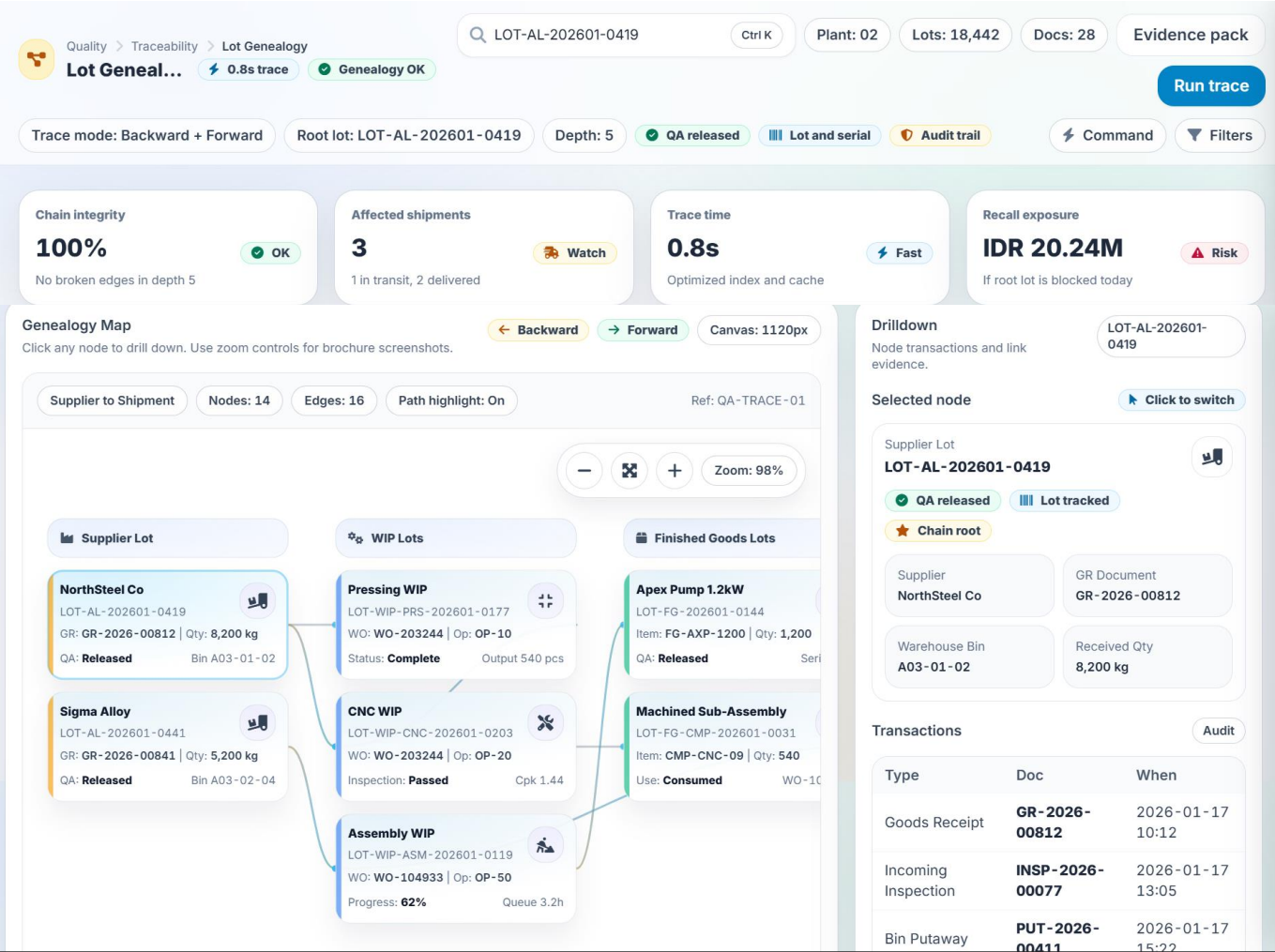
Quality CAPA and Nonconformance Hub

Control quality with closed loop discipline. Capture NCRs, enforce containment, drive root cause and corrective actions, and verify effectiveness before closure. Keep quality decisions traceable and ready for audits. Includes **NCR inbox, containment actions, CAPA workflow with approvals, defect analytics, supplier and process linkage**, and **effectiveness checks**. This module blocks or releases inventory for Warehouse and Production, updates supplier performance for Procurement, and writes auditable quality evidence that links to Lot Genealogy and compliance reporting.



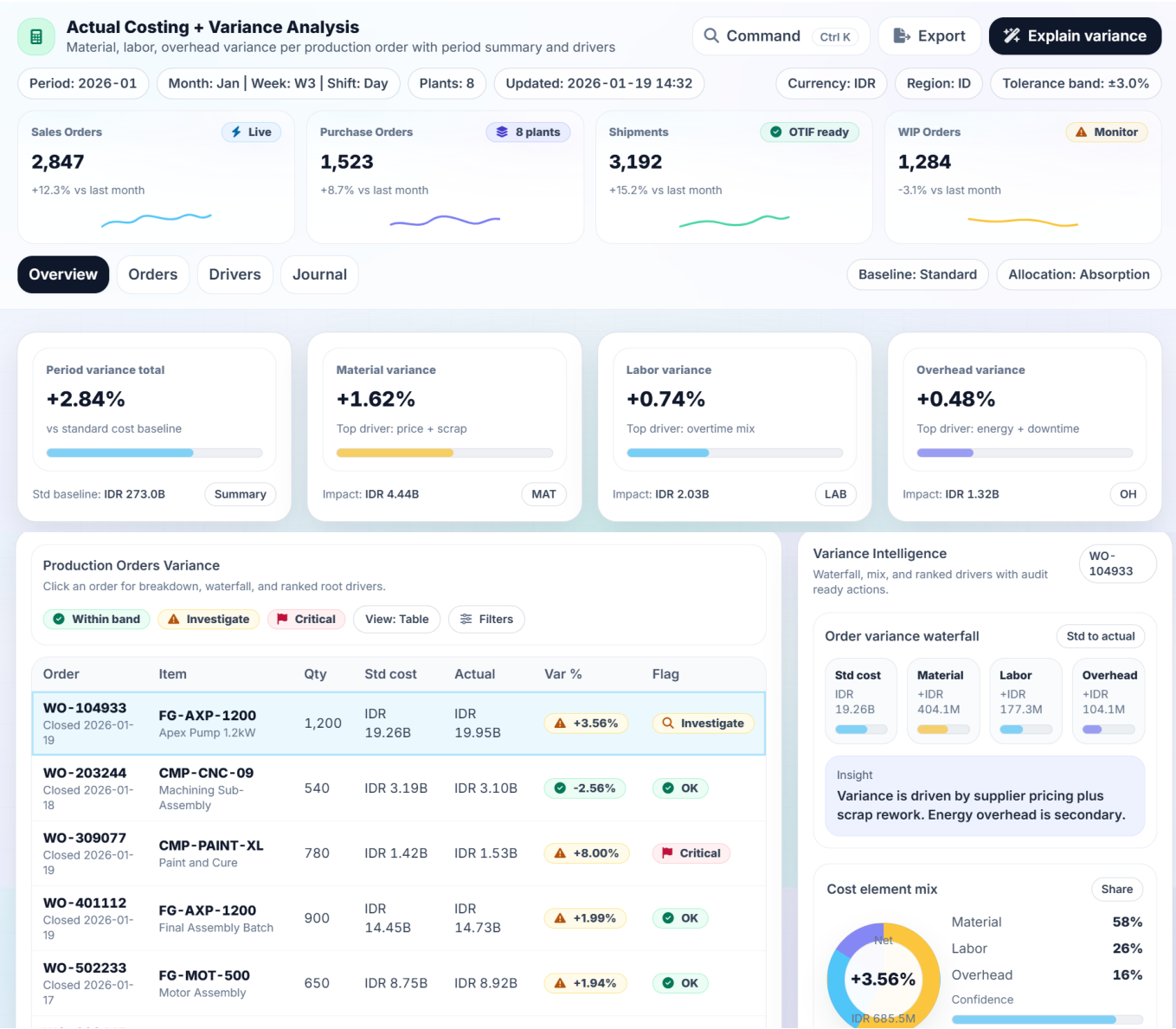
Lot Genealogy and Traceability Tree

Trace every lot from supplier to finished goods to customer shipment. Execute recalls with confidence by identifying scope in minutes, not days. Build compliance grade genealogy for regulated industries and export readiness. Includes **Lot and batch genealogy tree, upstream and downstream trace, recall scope builder, quality holds and dispositions, and evidence export for auditors and customers.** This module pulls lot events from Procurement, Warehouse, Production, and Quality, and feeds cost and margin attribution into Actual Costing and Profitability.



Actual Costing and Variance Analysis

Close the loop between operations and finance with real actual costing. Reconcile material, labor, overhead, and variances by order and by product. Turn variance from a monthly surprise into a controlled operational action list. Includes **Actual cost rollup by work order**, **variance drivers** (usage, rate, yield, overhead), **reconciliation views**, and **governance ready postings aligned to finance close**. This module consumes transactions from Production and Warehouse, validates standards from Engineering, and outputs financial postings and variance evidence into Finance and Profitability.



18									
WO-906778	FG-PMP-300	450	IDR 6.18B	IDR 6.02B	-2.59%	OK			
Closed 2026-01-17	Pump Assembly								
WO-107889	CMP-MACH-07	380	IDR 5.72B	IDR 5.91B	+3.32%	OK			
Closed 2026-01-19	Precision Machining								
WO-208990	FG-ENC-600	720	IDR 9.36B	IDR 9.68B	+3.42%	OK			
Closed 2026-01-16	Encoder Assembly								
WO-309101	CMP-COAT-03	560	IDR 7.28B	IDR 7.05B	-3.16%	OK			
Closed 2026-01-18	Coating Process								
WO-410212	FG-SEN-400	890	IDR 11.57B	IDR 12.49B	+7.95%	Critical			
Closed 2026-01-19	Sensor Assembly								
WO-511323	CMP-TEST-11	410	IDR 5.33B	IDR 5.18B	-2.81%	OK			
Closed 2026-01-17	Quality Testing								
WO-612434	FG-CTL-250	250	IDR 3.75B	IDR 3.88B	+3.47%	OK			
Closed 2026-01-16	Control Panel								
WO-713545	CMP-ASM-08	670	IDR 8.71B	IDR 9.02B	+3.56%	OK			
Closed 2026-01-19	Assembly Line								
WO-814656	FG-PLC-150	150	IDR 2.25B	IDR 2.43B	+8.00%	Critical			
Closed 2026-01-18	PLC Assembly								

Material variance

+2.10%

IDR 404.1M

Alloy price increase + scrap rework

Labor variance

+0.92%

IDR 177.3M

Overtime and learning curve

Overhead variance

+0.54%

IDR 104.1M

Energy usage during changeovers

Top variance drivers

Ranked

1. Alloy coil purchase price

Tag: Supplier pricing

+IDR 273M

2. Scrap and rework at final test

Tag: Quality

+IDR 139.5M

Profitability by Product and Customer

Move from cost reporting to profit decisions. Analyze profitability from period summary down to invoice line cost allocation and margin drivers. Keep “cost trace on” so leaders can defend margin actions with evidence, not assumptions. Includes **Profitability cockpit, product and customer margin ranking, cost allocation trace to material and operations, mix and price waterfall, and action list for margin leakage**. This module pulls actual cost evidence from Costing, revenue and terms from Order to Cash, and supplier and quality signals from Procurement and Quality to explain margin with operational drivers.

Profitability by Product and Customer

Audit ready Cost trace on

Executive profitability cockpit from period summary to invoice line cost allocation and margin drivers

Model: Profit v2.6 StdCost: 2026.01.2 Recalc job: 2026-01-19 14:35

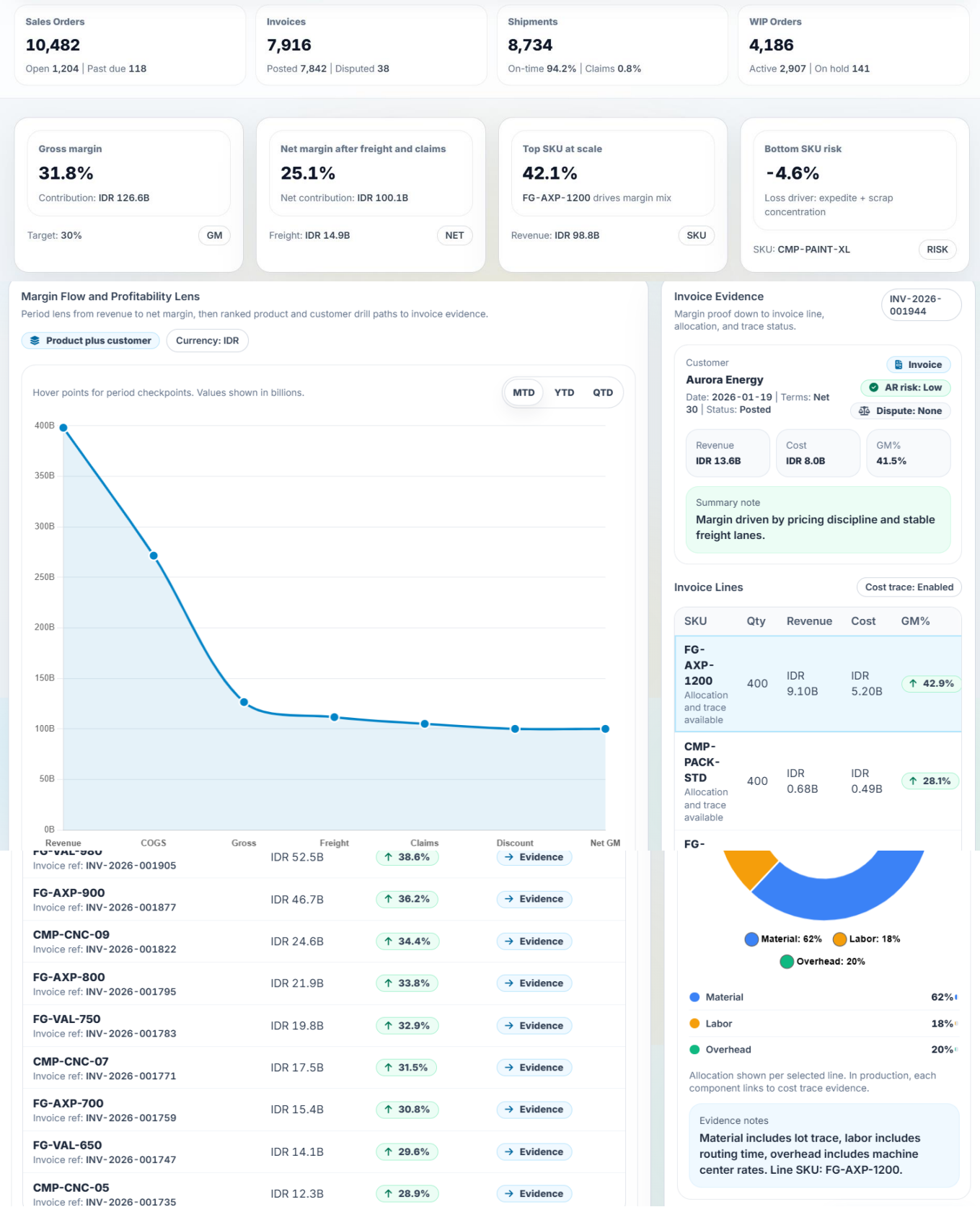
Search SKU, cu: Period: 2026-01 Plant: All (8) Currency: IDR

Month: Jan Week: W3 Shift: Day Region: ID Scope: Product + Customer + Invoice

Rankings Profit map Drivers Evidence pack

12 anomalies flagged 1-click drilldown

Density Export Share pack



Glossary

ATP (Available to Promise)

A method to calculate product cost based on real, recorded expenses (materials, labor, and overhead), so the cost reflects what actually happened in production.

BOM (Bill of Materials)

A complete list of all parts, components, and materials needed to build a product. Similar to a recipe for making a product.

CAPA (Corrective and Preventive Action)

A quality process to fix problems (corrective) and prevent them from happening again (preventive).

ECO (Engineering Change Order)

A planning system that calculates what materials are needed and when, based on demand, BOM, and production schedules.

MRP (Material Requirements Planning)

A planning system that calculates what materials are needed and when, based on demand, BOM, and production schedules.

NCR (Nonconformance Report)

A report created when a product or process does not meet required specifications.

OEE (Overall Equipment Effectiveness)

A performance metric that combines machine availability, speed, and quality into one score.

O2C (Order to Cash)

The full business process from receiving a customer order to collecting payment.

OTIF (On Time In Full)

A customer service measure showing whether orders are delivered on time and in the correct quantity.

Ready to Transform Your Manufacturing Operations at the Enterprise Level

Share your plant footprint, product complexity, planning constraints, procurement governance, quality standards, traceability requirements, and finance close pain points. Rayterton will configure a governance first ERP blueprint tailored to your operating model, then deliver a control tower demo with realistic volumes, audit ready evidence packs, and end to end traceability from demand to margin so leadership can validate outcomes before rollout.

Contact Us : **+62 812 9615 0369** **marketing@rayterton.com****About Rayterton**

Established in 2003, Rayterton delivers comprehensive Best Fit Software Solutions, server and hardware products, and technology services to a wide range of industries and organizations. Our core expertise lies in Business Process Improvement (BPI), IT Infrastructure, and IT Management.

At Rayterton, we are committed to empowering our clients by enhancing their business operations through tailored IT and management solutions. We combine innovation, experience, and client collaboration to ensure long-term success and digital transformation.

Our Competitive Strengths**100% Risk Free****Best fit to
client
requirements****Easy to
customize****Software
ownership****No Change
Request (CR)
fees during
maintenance****For more information, visit rayterton.com**